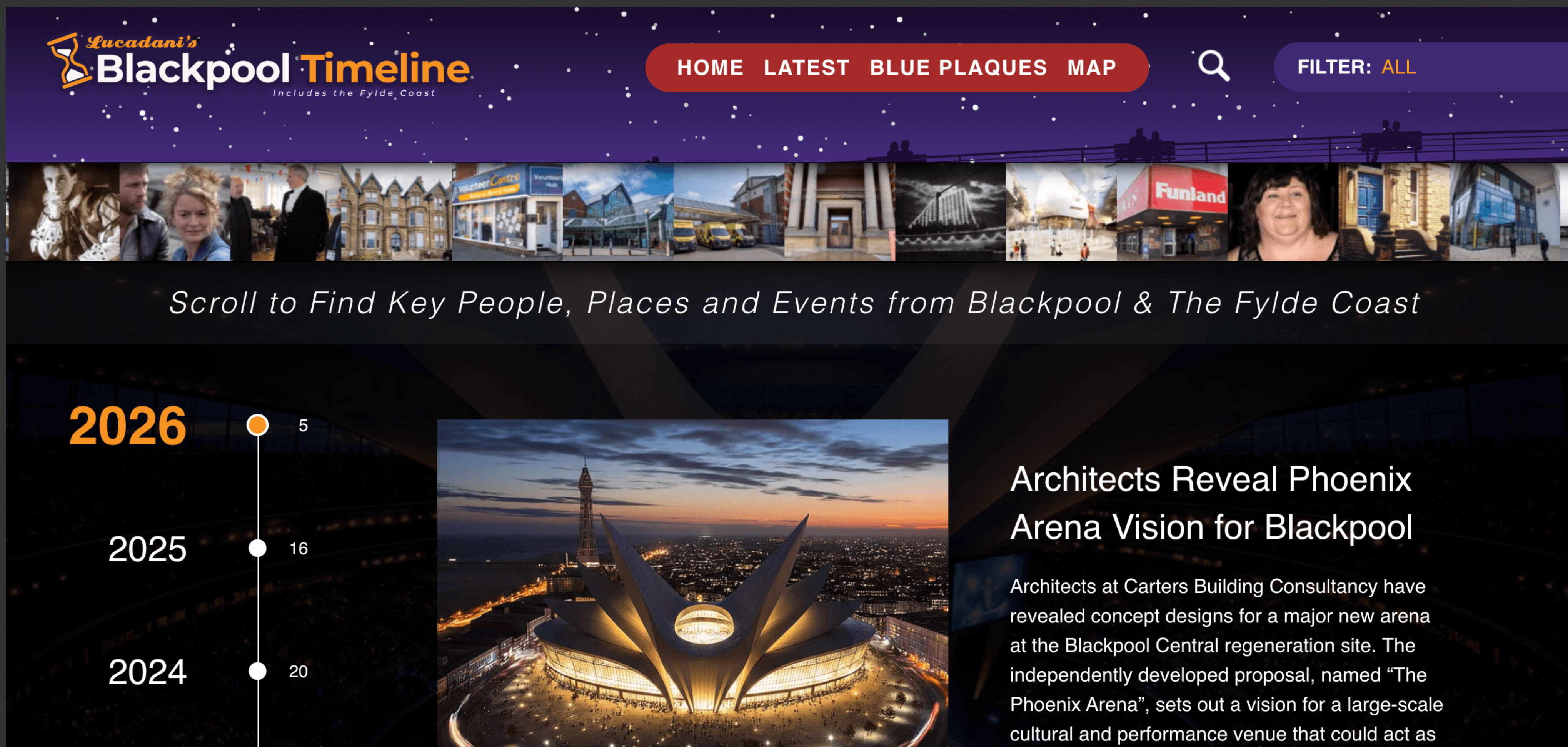


Introduction

- *Housekeeping*
- *Email database sharing & usage*
- *NEXT MEETING - Wednesday, ?? ????? 2026*
- *Registration for meetings automatically adds details to mailing list and also allows us to prepare name badges*
- *Please return your name badges before leaving*
- *Be ready for attendee introductions*

Ed Christiano



The screenshot shows the website interface for 'Lucadani's Blackpool Timeline'. The header features the site logo, navigation links for 'HOME', 'LATEST', 'BLUE PLAQUES', and 'MAP', a search icon, and a filter dropdown set to 'ALL'. Below the header is a horizontal gallery of images representing various Blackpool landmarks and people. A central text prompt reads 'Scroll to Find Key People, Places and Events from Blackpool & The Fylde Coast'. The main content area displays a vertical timeline with years 2024, 2025, and 2026. The year 2026 is highlighted with an orange dot and the number 5. A large image of the Phoenix Arena concept design is shown next to the 2026 entry.

2026 5

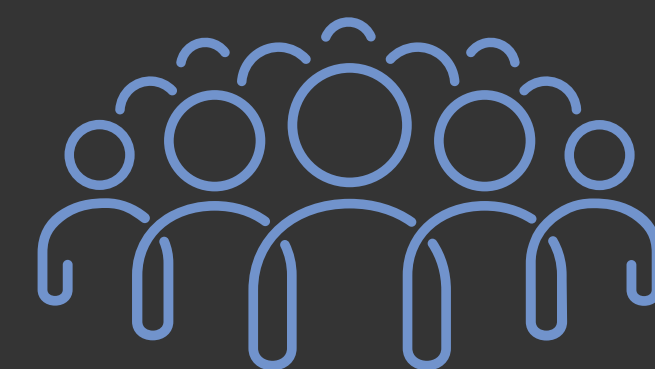
2025 16

2024 20

Architects Reveal Phoenix Arena Vision for Blackpool

Architects at Carters Building Consultancy have revealed concept designs for a major new arena at the Blackpool Central regeneration site. The independently developed proposal, named "The Phoenix Arena", sets out a vision for a large-scale cultural and performance venue that could act as

Ed Christiano



Blackpool CAN
COMMUNITY ACTION NETWORK

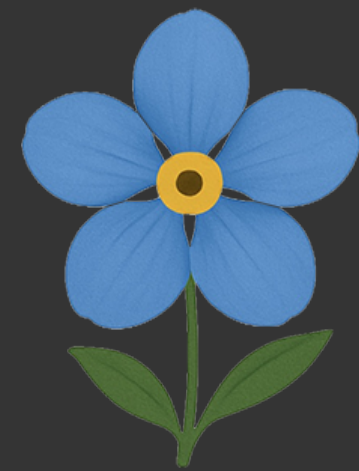
Free Website Hosting

Courtesy of BCAN & Deeper Blue





Blackpool CAN
COMMUNITY ACTION NETWORK



**FORGET ME NOT
DEMENTIA CAFÉ**
BLACKPOOL



The other side of
Blackpool

**poverty
truth
network**

Tony Carr



socialenterprisesolutions
community interest company



Blackpool CAN

COMMUNITY ACTION NETWORK



Volunteer Centre
Blackpool, Fylde & Wyre

Lynn Saggerson



Tracy Hopkins



Tony Carr



COMMUNITY FUND



Blackpool CAN
COMMUNITY ACTION NETWORK



Eric Wright Charitable Trust
Blackpool, Fylde & Wyre Funding



ERIC WRIGHT
GROUP



Blackpool CAN
COMMUNITY ACTION NETWORK



Attendee Introductions

30 seconds each





Blackpool CAN
COMMUNITY ACTION NETWORK



Blackpool CAN Partners



Chief Exec of Citizens Advice Blackpool

Tracy Hopkins

Update on health

What's Changing in the ICB and Why It Matters

- Overview of national and local NHS changes
- What the new operating model means
- How the ICB is evolving into a strategic commissioning organisation
- What this means for VCFSE and other partners


Tracy Hopkins

CEO, Citizens Advice Blackpool

Chair, VCFSE Alliance

Chair, Blackpool Place Based Partnership

Partner Member, Lancashire & South Cumbria ICB



Partnerships of organisations that come together to plan and deliver joined up health and care services to improve the lives of people in their area



Working together for better health and care

What the ICB Is (in Plain English)

- The ICB is the **partnership body** responsible for planning and funding NHS services across Lancashire & South Cumbria
- It brings together NHS, councils, VCFSE, and independent sector partners
- Its job: decide **what services are needed, who provides them, and how resources are used**
- Not a provider of services — a **system leader and convener**

Why Change Is Happening Now

National political shift and renewed focus on **prevention, integration, and local accountability**

Pressure on NHS finances and performance driving simplification

Expectation that systems work more effectively with **communities, local government, and VCFSE partners**

Move away from operational delivery toward **strategic leadership and commissioning**

The New NHS Operating Model (National Shift)



What This Means Locally



Streamlined leadership and decision-making



More emphasis on **strategic priorities** rather than day-to-day operations



Greater expectation that partners — including VCFSE — help shape and deliver population-level outcomes




Stronger alignment with local authorities and place-based partnerships




Moving Toward a Strategic Commissioning Organisation (1)

- **What “strategic commissioning” means:**
 - Understanding population needs
 - Setting long-term priorities
 - Designing service models
 - Allocating resources to deliver outcomes
 - Holding the system to account
 - **What it *doesn't* mean:**
 - Running services
 - Micromanaging providers
 - Replacing local delivery structures
-

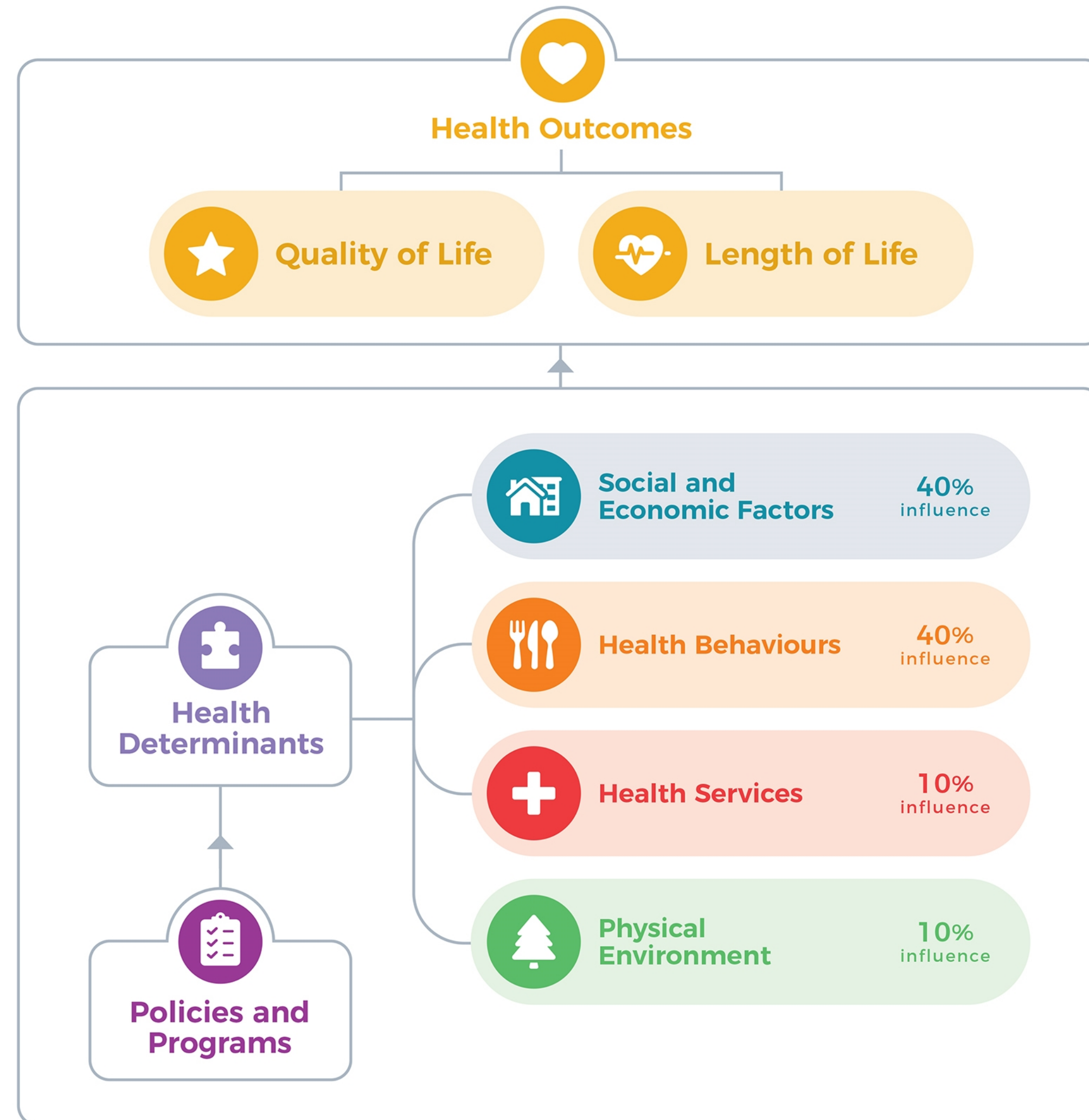


Moving Toward a Strategic Commissioning Organisation (2)



- **Why this shift is happening:**
 - Need for consistent standards and outcomes across the system
 - Financial sustainability pressures
 - Desire to reduce duplication across places
 - National expectation that ICBs lead on **prevention, inequalities, and integration**
 - **Implications for partners:**
 - More opportunities to influence strategy
 - Commissioning will be more outcomes-focused
 - VCFSE role becomes more visible and valued in prevention and early intervention
-

How much
of our health
happens
where?



What This Means to us



Looking Ahead: NHS Long Term Plan & Government Priorities

The NHS Long Term Plan: the big themes

Shift towards **prevention**, early help, and community-based support

Stronger focus on **mental health, children & young people, and long-term conditions**

Tackling **health inequalities** through place-based partnerships

Better integration of physical health, mental health, and social care

Government's long-term aims (cross-departmental)

- **Work & Health:** helping more people stay in or return to work through integrated employment and health support
- **Children & Young People:** improving early years support, school-based mental health, and transitions into adulthood
- **Sport & Physical Activity:** using movement and community sport to improve population health and reduce demand on services
- **Housing & Communities:** recognising safe, stable housing as a foundation for wellbeing
- **Justice & Health:** reducing reoffending through trauma-informed, health-led approaches

What this means for us

- Health outcomes increasingly shaped by **non-NHS partners**
- VCFSE and private sector central to prevention, wellbeing, and community resilience
- Opportunity to influence long-term strategy across multiple departments, not just health

Thank you

Questions?





Blackpool CAN
COMMUNITY ACTION NETWORK



Blackpool CAN Partners



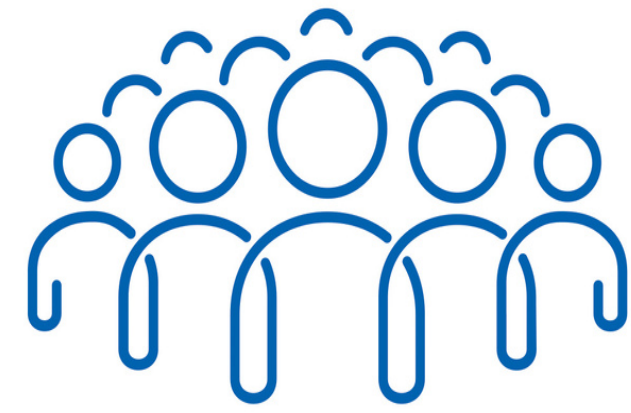
CEO of Community First

Lynn Saggerson



Blackpool CAN
COMMUNITY ACTION NETWORK

Building the capacity of the Voluntary, Community, Faith and Social
Enterprise sector in Blackpool



Blackpool CAN
COMMUNITY ACTION NETWORK



Blackpool

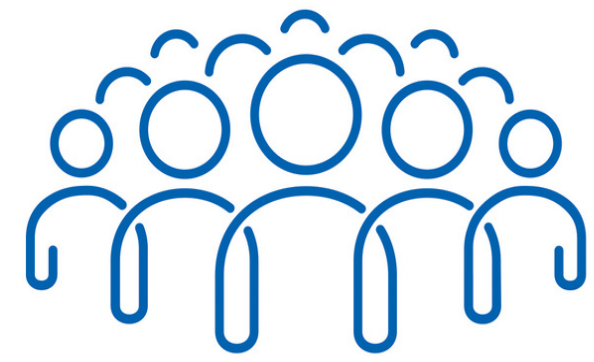




January 2023 – April 2026

UK Shared Prosperity Fund

- Funded by UK Government Levelling Up programme.
- 1 of 10 projects in Blackpool.
- Project delivery:
 - Volunteering/social action.
 - Capacity building and infrastructure support for VCFSE groups.
 - Community engagement schemes.





To strengthen volunteering and community capacity so organisations can thrive and communities can access opportunities that support wellbeing, resilience, and inclusion.

- Stronger, more resilient VCFSE organisations with improved skills, capacity and access to support.
- Greater sector collaboration and knowledge sharing through active networks and local leadership.
- Higher volunteer engagement and retention, with improved skills development.
- More equitable access to support, reducing health inequalities and helping communities stay healthy and connected.





May 2026 – April 2029

National Lottery Community Fund

Over the next three years we will continue to:

- Support VCFSE groups with capacity building.
- Support new and emerging social enterprises with business development.
- Support Volunteer Involving Organisations with recruitment, training and good practice support.
- Deliver cross sector meetings and develop a Blackpool VCFSE strategy



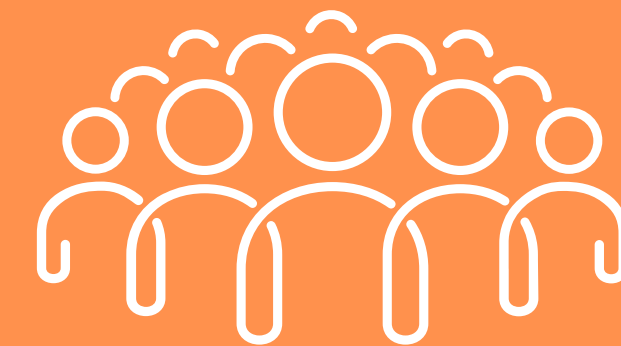
Support & Training

Workshops:

- Bid Writing
- Governance
- Social Media
- Finance

Group Support and Advice

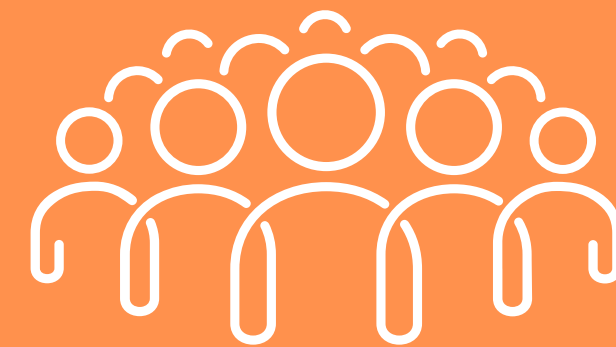
- Business Planning
- Governance Structures
- Finance
- Funding
- Bid writing
- Partnership working



Blackpool CAN
COMMUNITY ACTION NETWORK

Volunteering

- Support with volunteer recruitment.
- Volunteer management good practice.
- Better Volunteering Standard.
- Blackpool Volunteering Strategy
- Blackpool's Big Thank You.



Blackpool CAN
COMMUNITY ACTION NETWORK

Networks

- Fylde Coast Resilience
- Volunteer Coordinators Network
- VCFSE Leadership Group



Blackpool CAN
COMMUNITY ACTION NETWORK

Grants & Funding

Eric Wright Charitable Trust

Grants are available to community projects in Blackpool, Wyre or Fylde.
Organisation turnover must be less than £30,000.

Grassroots grants – up to £250.00 for un-constituted community groups.

Community grants – up to £500.00 for constituted community groups.

Longer-term community grants – up to £1000 for constituted community groups who are proposing to deliver a project of 12 weeks or longer.

Guidance and application form:

<https://www.communityfirstbwf.org/small-grants/eric-wright-charitable-trust>

Grants & Funding

LACVS LOCAL FYLDE COAST VCFSE SUPPORT FUND

Grants are available to community projects in Blackpool, Wyre or Fylde. Organisation turnover must be less than £100,000.

A strong focus on smaller constituted grassroots groups and smaller charities/ social enterprises that connect people in their communities and improve community wellbeing.

9 x Community grants of up to £2,000 plus one grant of up to £4,000.

Guidance and application form:

<https://www.communityfirstbwf.org/small-grants/lacvs-local->

Q & A



Blackpool CAN
COMMUNITY ACTION NETWORK



Blackpool CAN
COMMUNITY ACTION NETWORK



Thanks for Listening





**FYLDDE
COAST
RESILIENCE**

Thank you for attending. Please return your name badges before leaving.